



French Quarter Festival 2025 Volunteer Maps



MAP 1 - OVERHEAD VIEW OF FESTIVAL
French Quarter Festival presented by Chevron 2025
Thursday, April 10th – Sunday April 13th



Volunteer Maps are numbered to match internal festival production maps – and therefore intentionally excludes certain numbered maps



French Quarter Festival 2025 Volunteer Maps



MAP 2 – GETTING TO CHECK IN

French Quarter Festival presented by Chevron 2025

Thursday, April 10th – Sunday April 13th

MAP 10: JAX LOT

**VOLUNTEER CHECK-IN FOR
VOLUNTEERS ON MAPS 3-11
LOCATED IN JAX LOT**

Volunteer Check In for shifts taking place in Spanish Plaza, Woldenberg Park, Jax Lot, and Jackson Square (Maps 3-11) is located at:

**Jax Brewery Parking Lot
500 Decatur Street, New Orleans, LA 70130
By the intersection of St. Louis and Decatur**

Jax Lot is the festival site located below Decatur St., in between the cross streets of St. Louis and Toulouse. If standing on Decatur Street, facing the parking lot, Volunteer check-in is located on the right side of the lot, near the St. Louis Gate entrance (farthest from the Chevron Stage).

MAP 13: NOJM MINT

**VOLUNTEER CHECK-IN FOR JAZZ
MUSEUM (MAP 13) – BARRACKS ST.**

Volunteer Check In for shifts taking place at the New Orleans Jazz Museum at the Old US Mint (Map 13) is located at:

**New Orleans Jazz Museum
400 Esplanade Ave., New Orleans, LA 70130
Barracks Street Courtyard (Riverside)**

Volunteers should use the Barracks Street entrance, closest to the French Market for easy access to the booth.

We encourage using a bicycle or public transit to get to the Fest! Volunteers are offered free rides to and from fest via Blue Bike! Once signed up, Volunteers will receive Blue Bike voucher via email, closer to the event.

MAP 3: SPANISH PLAZA

Thursday through Sunday 11AM – 8PM
French Quarter Festival presented by Chevron 2025

Volunteer Check-In:

Jax Lot (Map 10)

Located on the corner of Decatur Street and St. Louis Street, in the Jax Brewery parking lot

MAP NOT TO SCALE



Riverwalk
Entry Gate

Archway
Entry Gate

MERCH – Spanish
Plaza - G

ICED TEA – Spanish Plaza - C

BEER – Spanish Plaza - E

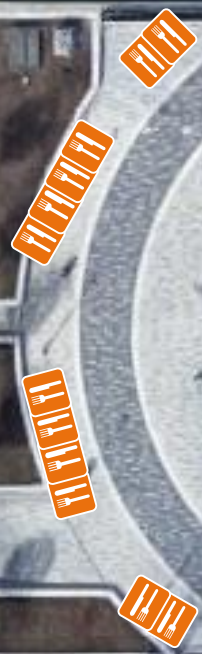
Jack
Daniels
Stage

FEST
FAMILY

Info/HQ – Spanish
Plaza:
Green Team and
Info Shifts HQ

HQ

First Aid



MAP 4: AQUARIUM PLAZA

Thursday through Sunday, 11AM – 8PM

French Quarter Festival *presented by Chevron* 2025

Volunteer Check-In: Jax Lot (Map 10)

Located on the corner of Decatur Street and St. Louis Street, in the Jax Brewery parking lot

MAP NOT TO SCALE



Canal Entry Gate
DONATION AREA

BEER – Aquarium Plaza - H

H

**DJ
STAGE**

KOHLMEYER LAWN



Google

MAP 5: RIVER, KOHLMAYER LAWN

Thursday through Sunday 11am-8pm

French Quarter Festival *presented by Chevron* 2025

Volunteer Check-In: Jax Lot (Map 10)

Located on the corner of Decatur Street and St. Louis Street, in the Jax Brewery parking lot



MAP NOT TO SCALE



BERGER LAWN

GEAUXING GREEN
INFO TENT

Woldenburg Park
Green Team HQ

BEER - Kohlmeyer
Lawn - L

ICED TEA -
Kohlmeyer Lawn - J

Culinary Stage

AQUARIUM
PLAZA



MAP 6: RIVER, BERGER GREAT LAWN

Thursday through Sunday, 11AM – 8PM

French Quarter Festival *presented by Chevron* 2025

Volunteer Check-In: Jax Lot (Map 10)

Located on the corner of Decatur Street and St. Louis Street, in the Jax Brewery parking lot



MAP NOT TO SCALE

Bienville Entry Gate
DONATION AREA

Conti Entry Gate
DONATION AREA

KOHLMEYER LAWN

BEER – Berger Great Lawn (Super Booth) - N

N

FEST FAMILY

First Aid

Abita Beer Stage



Info/Fest Fam Concierge – Berger Great Lawn - Q

Q

PALM LAWN



MAP 7: RIVERFRONT, PALM LAWN

Thursday through Sunday 11AM – 8PM

French Quarter Festival *presented by Chevron* 2025

Volunteer Check-In: Jax Lot (Map 10)

Located on the corner of Decatur Street and St. Louis Street, in the Jax Brewery parking lot

MAP NOT TO SCALE



MAP 8: RIVERFRONT, NATCHEZ WHARF

Thursday through Sunday, 11AM – 8PM
CHEVRON STEM ZONE: Saturday and Sunday @ 11am-5pm

French Quarter Festival *presented by Chevron* 2025

Volunteer Check-In:

Jax Lot (Map 10)

Located on the corner of Decatur Street and St. Louis Street, in the Jax Brewery parking lot

MAP NOT TO SCALE

Toulouse Street
Entry Gate

JAX LOT &
VOLUNTEER
CHECK-IN

PALM LAWN

St. Peter Entry
Gate

DONATION AREA



MAP 10: JAX BREWERY PARKING LOT

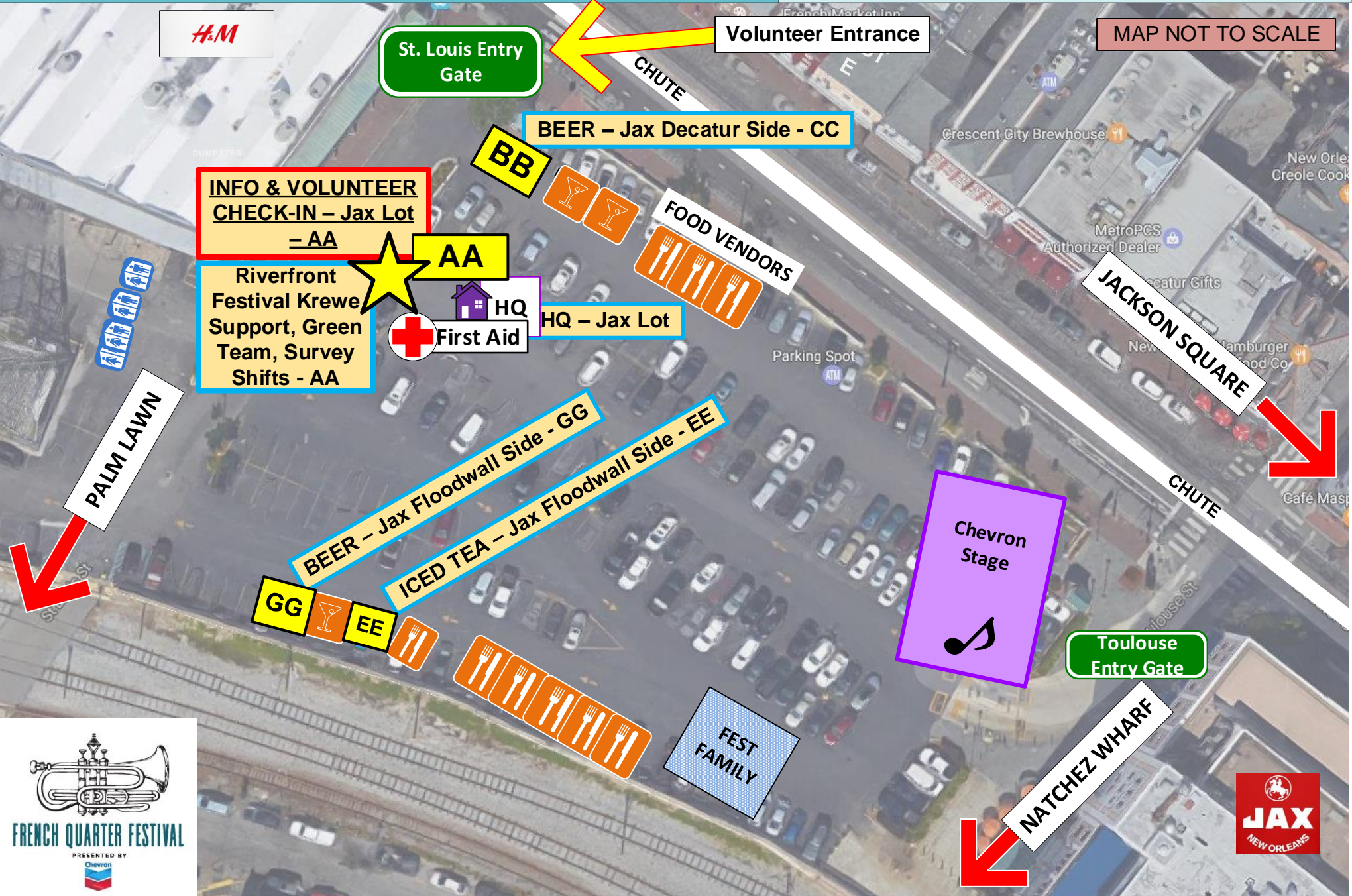
Thursday through Sunday, 11AM-8PM

French Quarter Festival *presented by Chevron* 2025

Volunteer Check-In:

Jax Lot (Map 10 - This Map!)

Located on the corner of Decatur Street and St. Louis Street, in the Jax Brewery parking lot



MAP NOT TO SCALE



BEER – Jackson Sq. / Chartres - HH



BEER – Jackson Sq. / St. Ann - LL



HQ – Jackson Sq.: Green Team, Survey, Donation Shifts HQ



MERCH – Jackson Sq. - QQ



BEER – Jackson Sq. / Decatur - NN



New Orleans & Co. Stage



VOLUNTEER CHECK-IN AT JAX LOT



MINT



MAP 11: JACKSON SQUARE

Thursday 10:45AM – 7PM
Friday through Sunday 11AM – 7PM

**French Quarter Festival
presented by Chevron 2025**

Volunteer Check-In:

Jax Lot (Map 10)

Located on the corner of Decatur Street and St. Louis Street, in the Jax Brewery parking lot

MAP 13: N.O. JAZZ MUSEUM AT THE MINT

Friday through Sunday 11AM – 7PM

French Quarter Festival presented by Chevron 2025

Volunteer Check-In: MINT (Map 13 – This Map!)
Located on the corner of Barracks Street & Elysian Fields Ave.

MAP NOT TO SCALE



Volunteer Entrance